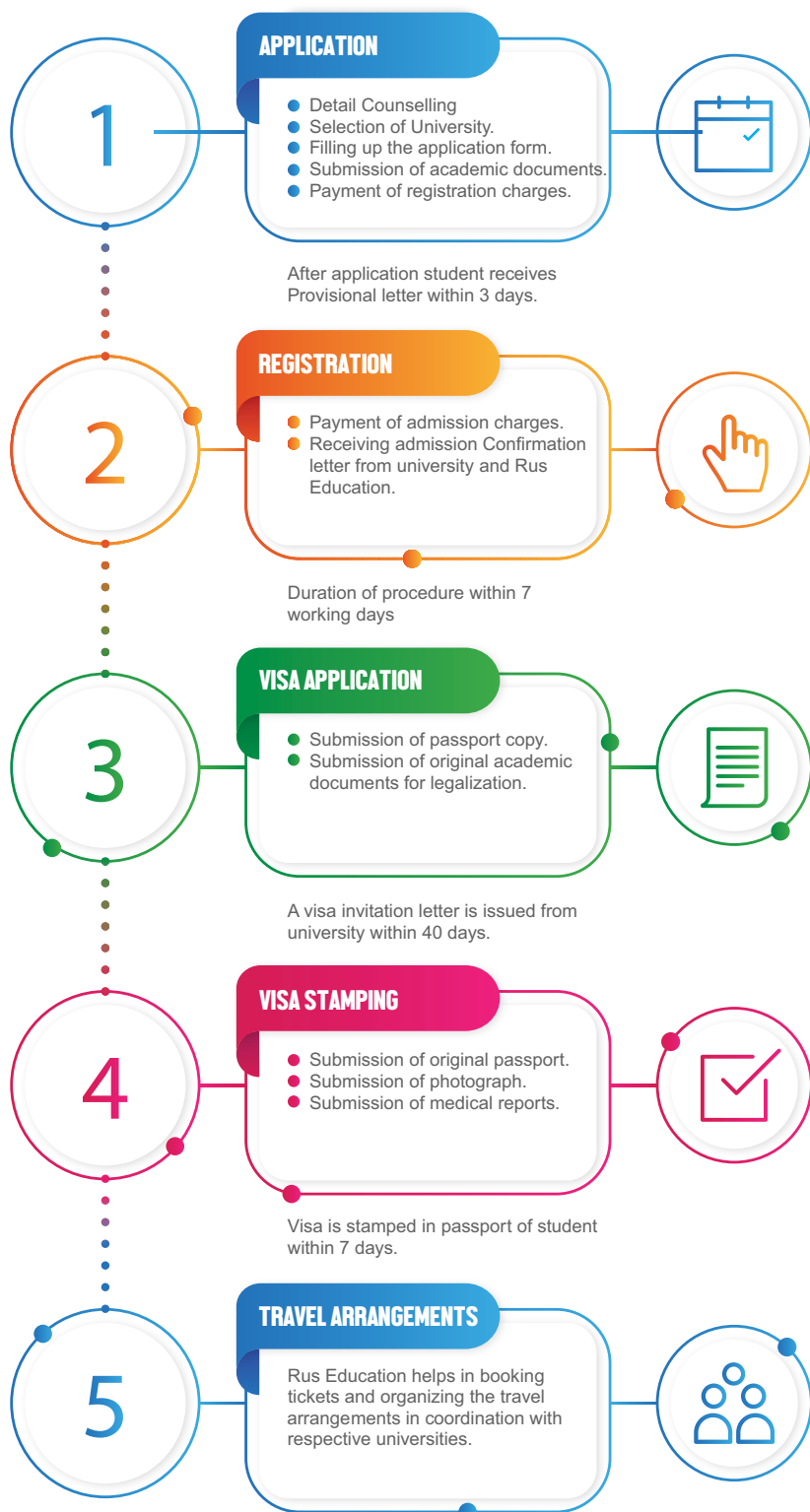


## ADMISSION Process



### Processing FEES

**NO DONATION  
HIDDEN CHARGES**

**₹ TOTAL  
125000**

**FOR YOUR EASE, WE OFFER  
YOU OPTIONS OF INSTALMENT:**

**₹ REGISTRATION  
CHARGES  
25000**

**₹ ADMISSION  
CHARGES  
100000**

Conditions Apply:

Legalization, Apostille and Documentation charges extra

Air Ticket Charges as applicable

100% NON REFUNDABLE

18 % GST extra

## Personalized SERVICES

- ✓ Consultation regarding the education system abroad, conditions of admission to universities, rules and internal regulations of student hostels, life and health insurance, application for the issuance of an invitation letter to study in any country.
- ✓ Preliminary evaluation/assessment of educational documents (e.g., senior school certificates) for their compliance with the requirements of admission to Foreign state universities
- ✓ Assisting with admission to the university of choice according to the chosen specialty and degree
- ✓ Attestations, translations, required authorizations and all other documentation procedures required to be completed by the student.
- ✓ Advice on arranging finances and securing education loans from banks.
- ✓ A get together and introduction session of all students and their parents before departure to the destination country.
- ✓ Provides you International Student Identity Card.
- ✓ Schedule the departure with other students and giving you information about the group departure.
- ✓ Guide you with the airport embarkation and emigration clearance formalities.
- ✓ Send our special representative at the airport to receive the students and bring them to their universities safe and sound.
- ✓ Escorting the student from Airport to the University.
- ✓ Providing the accommodation till the students get the hostel room.
- ✓ Assist you in your hostel registration and allotting you the room.
- ✓ Assist you in final documentation in the university.
- ✓ Assist you in getting local SIM Card in country.
- ✓ Assist you in getting enrolment in hostel mess.
- ✓ Assist you in issuance of your library membership card.
- ✓ Assistance in medical insurance.
- ✓ Assist you in your medical check-up in university at the time of arrival.
- ✓ Providing assistance in obtaining the Certificate of Equivalence from the Ministry of Education of the Destination Country.
- ✓ Assisting in transfer to another university or change of specialty if the student wishes.
- ✓ Coordination with university authorities in Monitoring students' academic progress and behaviour
- ✓ Providing information and consultation in obtaining a visa for students' parents to visit their children.
- ✓ Assist you in visa extension in Russia.
- ✓ Support during the entire period of study.
- ✓ Assistance in providing visa to parents for their visit (if require).
- ✓ Assist parents in their smooth travel arrangements.
- ✓ Assist you in getting visa stamping done.
- ✓ Assist you in getting air tickets throughout the period of study.
- ✓ Assistance in enrolling for MCI screening test coaching classes.
- ✓ If student wish to change the room in hostel, assistance is given, provided genuine reason given by student.
- ✓ Complete assistance is provided at the time of urgency.
- ✓ Any other assistance that may be required by students.

